

**Fredrik Hjalmar
Johansen's Kayak**
Frammusset, Oslo,
Norway

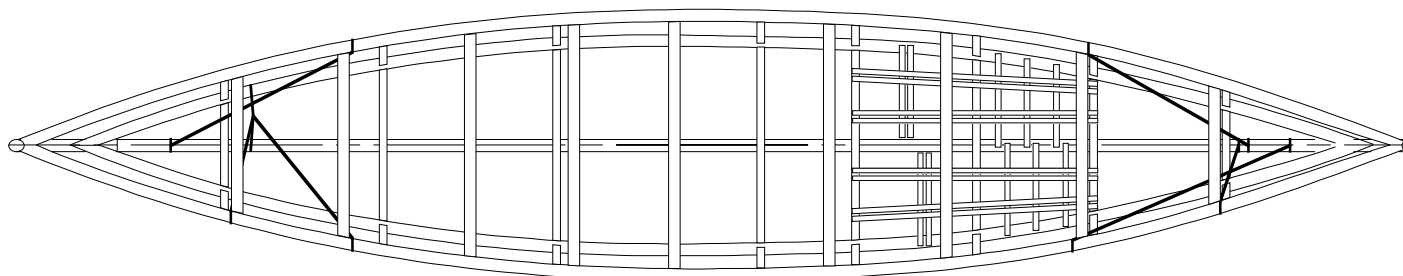
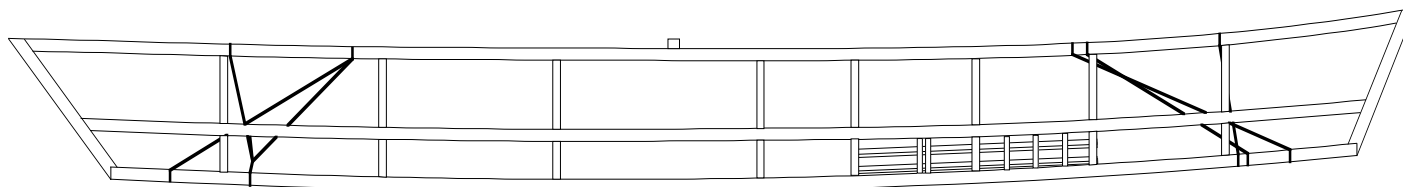
FRAM 171
Length 372.2
Beam 72.5
Depth to Sheer 36.4
o/a Depth 41.3

Built by Otto Mogstad,
Fridtjof Nansen and
Fredrik Hjalmar
Johansen,
November 1894,
Polar Sea.

Scale 1:20

Lines taken off by
Josh Bertwistle and
Flemming Sorvin,
May 2001.

Drafted by Flemming
Sorvin, 2002.



Fram 171

Offsets taken from frame reconstruction using projected keel and gunwales as base and my own speculations"

June 17, 2002

Measurements to outside of skin

Sta	Keel Ht	Deck Ht	Chine Ht	Chine HB	Gunwale Ht	Gunwale HB
0		47.15				
30	9.73	46.35	23.91	5.38	44.77	11.68
50	8.82	45.82	23.21	12.04	44.23	17.9
100	7.19	44.86	21.99	23.34	43.27	29.29
150	6.55	44.55	21.46	28.71	42.97	34.79
200	6.95	44.39	21.75	29.00	42.80	35.70
250	8.54	44.86	22.50	26.34	43.27	32.79
300	11.34	46.82	24.78	17.78	45.22	23.69
351	15.55	51.85	28.54	3.70	50.27	7.69
372.2		55.15				